

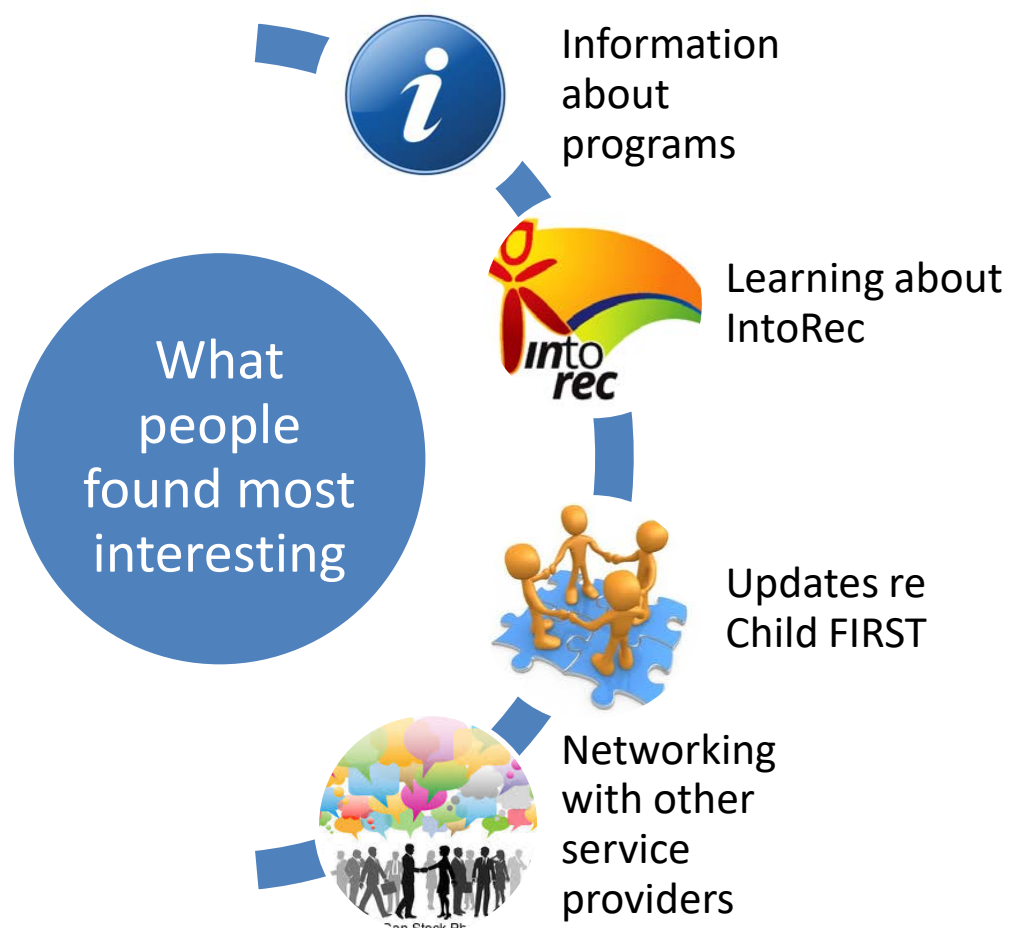
## Comments

- It was great!

Government Agency
- Maybe let people know that it will be outside so they can dress appropriately.

Another community agency
- Showcase other service providers in the forum.

Another community agency



# Questions and Discussion Points

Discrete questions and comments were received throughout the forum and were grouped as follows.

## Child FIRST

- Referral to other services      Waiting lists
- When seeking help who do you call
- Geographic coverage of services

## Parent Child Program

- Re-accessing service

## Cradle to Kinder

- Details of service
- Criteria
- Running women's groups in Cobram

## Men's Program

- Distinguishing between group and individual needs
- Options to not attend group      Drop-out rate
- Referrals that are mandated or voluntary      Outreach

## DSS/IntoRec

- `Holiday program      Waiting list
- Visiting Shepparton office      Impact of NDIS
- Long term clients

## CSS

- Available support in Cobram

## Community Development

- Being on mailing list
- Support for parents of multiple births and c-sections
- Video-conferencing for training